



From Build to Distribution  
– We've Got NZ Covered

# New Zealand's Total Connection Company



# Table of Contents

<b>Civil Works and Horizontal Drilling</b>	<b>4</b>
<b>Fibre Infrastructure Solutions</b>	<b>7</b>
<b>Mobile Infrastructure Excellence</b>	<b>8</b>
<b>IT Services</b>	<b>10</b>
<b>IT Distribution</b>	<b>12</b>
<b>Supply Chain Solutions</b>	<b>14</b>
<b>Recycling and Resource Recovery Services</b>	<b>16</b>
<b>Meeting Room Solutions</b>	<b>18</b>
<b>Residential &amp; Commercial Energy Solutions</b>	<b>20</b>
<b>Our Health and Safety Commitment</b>	<b>22</b>



# Why Choose Entelar Group?

Entelar Group is New Zealand's leading integrated technology solutions provider, supporting the critical infrastructure that keeps our country connected. From civil works and fibre deployment to mobile networks, IT distribution, logistics, and IT services - we manage the full lifecycle, from design and build to responsible recycling.

With over 450 locally based staff and 120 service touchpoints nationwide, our reach and technical depth make us the trusted partner for powering New Zealand's digital future. Every solution is underpinned by best practice in Health and Safety, ensuring reliability and care at every step.

**Solutions made simple. Coverage that spans the country.**



# Drilling the Right Way

## Precision Underground Solutions

Entelar Group is a leader in civil infrastructure, specialising in Horizontal Directional Drilling (HDD) and underground solutions across New Zealand. Our expertise spans water renewals, fibre deployment, fibre design, and broader civil works, ensuring future-ready connectivity with precision, sustainability, and minimal disruption.

### Horizontal Directional Drilling Applications:



#### Telecommunication Cables (Fibre Optic Core Network)

- Trenchless installation of high-speed fibre optic cables connecting cell sites and customer premises across to core networks.
- Installation of ducting.



#### Water & Sewer Pipelines

- Install pipes under roads, rivers, and urban areas without disturbing the surface.



#### Electrical Power Cables

- Install underground power lines under roads or through environmentally sensitive zones.



#### Stormwater Drainage Systems

- Construct stormwater pipes without digging up streets or landscapes.



#### Railway Crossings

- Install utilities beneath rail tracks without disrupting train services.
- Design resource consenting and installation of pipes under rail corridors.



#### Landing Support for Submarine Cable Installations

- Lay underwater cables for internet or power transmission.



Scan to find  
out more



## Key Area of Expertise: HDD for Fibre

### Benefits of HDD



### Why HDD for Fibre Optic Installations?

HDD has transformed the way underground utilities are installed, particularly in high-density urban areas, commercial zones, and environmentally sensitive regions. Traditional trenching methods are often disruptive, time-consuming, and costly, while HDD provides a trenchless, efficient, and cost-effective solution that ensures fibre networks are deployed faster, safer, and with minimal surface impact.

### Key Benefits of HDD for Duct Installation

- **Minimal Surface Disruption** – No need for extensive excavation, reducing road closures, business downtime, and environmental damage.
- **Precision and Accuracy** – HDD technology allows for exact placement of fibre conduits, following a pre-determined bore path beneath obstacles such as roads, rivers, railways, and existing infrastructure.
- **Faster Deployment** – HDD enables quicker installation, reducing labour and restoration costs while meeting tight project timelines.
- **Future-Proofing Networks** – Our solutions support high-speed fibre demands, ensuring New Zealand's networks are built for the future.
- **Environmental and Safety Compliance** – With HDD, we significantly reduce the impact on the surrounding environment and adhere to local compliance and safety regulations.

# Creating Seamless Connectivity

## Fibre Infrastructure Solutions

Entelar Group is New Zealand's trusted leader in fibre infrastructure solutions, providing end-to-end services for design, deployment, and maintenance across New Zealand. With a focus on precision, innovation, and minimal disruption, we empower businesses, communities, and network providers with future-ready fibre connectivity.

### Fibre Infrastructure Applications:

#### Fibre Network Deployment

- Planning, design, and installation of fibre optic networks.
- Ensures high-speed, low-latency connectivity for businesses and communities.

#### FTTP (Fibre to the Premises) Solutions

- Enabling ultra-fast broadband directly to businesses.
- Enhancing digital experiences with reliable, high-capacity connectivity.

#### Backhaul & Core Network Solutions

- High-speed fibre connections to support mobile and broadband networks.
- Enables seamless data transmission with minimal latency.

#### Data Centre Connectivity

- High-performance fibre links for data centres and cloud services.
- Supporting critical infrastructure with ultra-reliable connectivity.

#### Rural Fibre Expansion

- Extending fibre networks to underserved and remote locations.
- Reducing the digital divide and enabling regional development.

#### In-Building Fibre Solutions – Structured Cabling

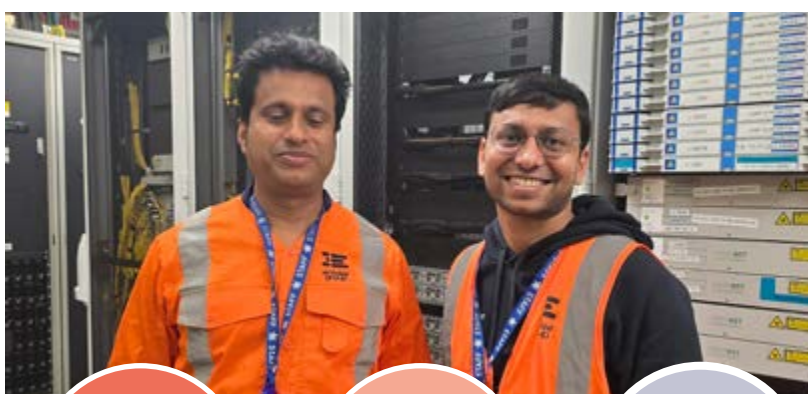
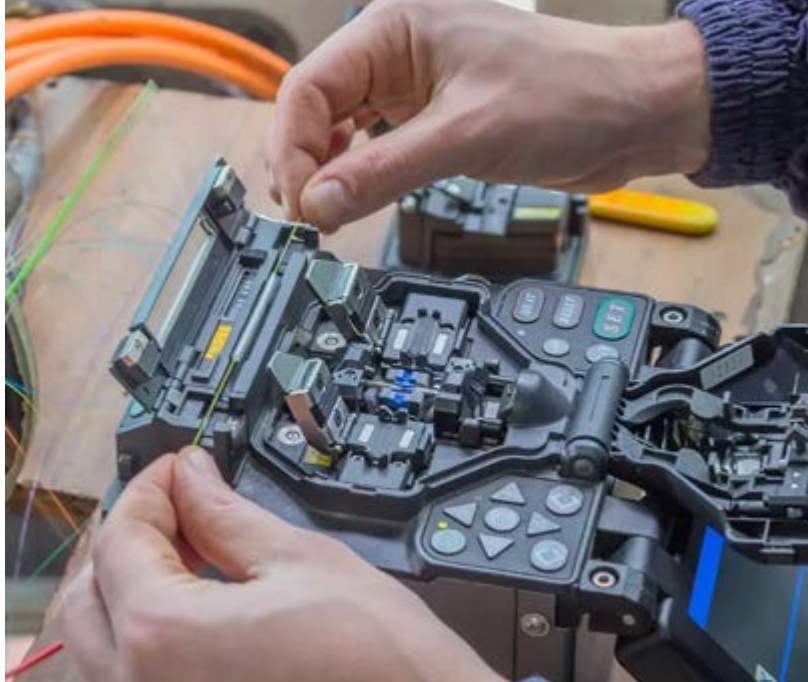
- Structured cabling and fibre installations for commercial and residential buildings.
- Enhancing network performance for businesses and smart buildings.

#### Temporary & Emergency Fibre Connectivity

- Rapid deployment of fibre solutions for events, business continuity, and disaster recovery.
- Ensuring seamless operations in critical situations.



Scan to find out more



**Planning & Design**  
Blueprinting high-speed fibre networks for business and communities.



**Fibre Network Deployment**  
Installing networks to ensure low-latency, high-speed connectivity.



**FTTP Solutions**  
Delivering ultra-fast broadband to businesses.



**Backhaul & Core Network**  
Supporting seamless data transmission with minimal latency.



**Data Centre Connectivity**  
High-performance links for critical infrastructure.

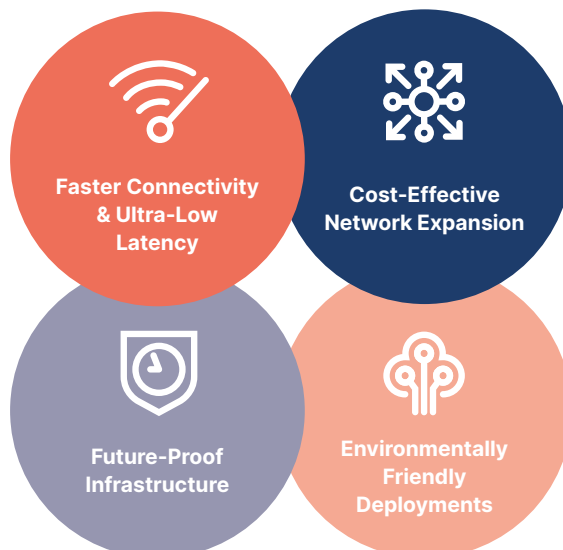
## Why Choose Entelar Group for Fibre Infrastructure?

Entelar Group has a proven track record in delivering fibre network solutions that enhance connectivity, improve network resilience, and support New Zealand's digital future. We leverage cutting-edge technology and industry expertise to deliver tailored solutions that meet the evolving needs of businesses and communities.

### Key Benefits of Our Fibre Services:

- **Comprehensive Project Management:** From design to deployment, ensuring efficiency and quality.
- **Minimal Disruption:** Deployments that reduce impact on communities and businesses.
- **Scalable Solutions:** Supporting the growth of high-speed broadband and next-gen networks.
- **Regulatory & Safety Compliance:** Adhering to industry standards and safety protocols.
- **Nationwide Coverage:** Delivering solutions across urban and rural New Zealand.

## Benefits of Our Fibre Solutions



# Mobile Infrastructure that Connects New Zealand

## Keeping New Zealand in Touch

Entelar Group is New Zealand's trusted mobile infrastructure leader, powering modern networks nationwide through comprehensive end-to-end services. Entelar Group partners with premier mobile network operators and tower companies to deliver high-performance connectivity solutions that benefit businesses, public services, and communities throughout the country.

Combining technical excellence and local expertise at every stage, particularly in implementing sophisticated Radio Networks and structural systems, Entelar Group's skilled delivery teams excel at deploying and maintaining large-scale infrastructure - all while minimising downtime and maximising network reliability.

**Entelar Group's end-to-end approach covers the complete network life-cycle from initial planning and site acquisition to design, engineering, construction, integration, and ongoing maintenance.**

### Building the Infrastructure That Connects

Entelar Group provides deep technical capability across all essential network components. Areas of specialisation include:

#### Radio & Transmission Networks

- Design and deployment of radio networks including base stations and antennas that ensure high-quality coverage.
- Development of transmission networks enabling high-capacity data transfer using microwave and fibre backhaul solutions.

#### Indoor Coverage Systems

- Distributed Antenna Systems (DAS) that provide reliable service within office buildings, malls, and public venues.

#### Passive Infrastructure

- Delivery of towers, poles, shelters, and integrated power systems – forming the foundation on which active equipment operates.

#### IoT Integration

- Support for IoT enablement for scalable machine-to-machine connectivity across a range of industries.
- Preparation of networks for future technological demands.



We combine cutting-edge Mobile technology with deep industry expertise to create tailored solutions that keep businesses and communities connected.



Scan to find out more



### Deployment & Delivery Models

Entelar Group offers scalable deployment services, including:

- **Greenfield Developments:** New mobile sites in underserved areas.
- **Network Modernisation:** Infrastructure upgrades and technology replacements to enhance capabilities.
- **Temporary & Event Solutions:** Short-term coverage for events and emergencies.

We manage all processes end-to-end, ensuring seamless integration with minimal service disruption.

### Project Support & Supply Chain Excellence

Exceptional deployments require exceptional support. Entelar Group offers a comprehensive suite of logistics, warehousing, and procurement services to ensure streamlined delivery. A national supply chain network enables fast turnaround times and full SLA compliance, with sophisticated forecasting capabilities. This all contributes to helping clients stay ahead of network demand, reducing delays and optimise project costs.

## Entelar Group's Mobile Infrastructure Services



# Creating Protected, Dependable Connections for Growth.

## Powering Business Success with Smart Connectivity

Entelar Group IT Services build, service, commission, install, and maintain hardware and software on-site. We provide diagnostics and problem isolation/resolution services across the IT, Energy, and Platforms sectors for government and private organisations throughout New Zealand.

We support our customers effortlessly and efficiently, minimising downtime and optimising performance through expert installation, support, and end-to-end management of enterprise network infrastructure.

### Why Choose Entelar Group?

Entelar Group offers tailored IT services solutions for businesses requiring robust connectivity.



## Our Solutions

Entelar Group provides a comprehensive range of IT services, ensuring businesses receive top-tier network infrastructure support.

### Our Services:

- Nationwide 24/7 IT Services support.
- PSTN, NEAX, and Access and Aggregation maintenance and build support.
- Meeting Room Solutions: pre-staging, installation, quality checks, and support, including video conferencing system setup, training, and maintenance.
- Desktop support and build services (various platforms and hardware – tablets, laptops, and desktops, including offsite secure builds).
- Secure storage and asset management, including end-of-life asset processing.
- Software and hardware upgrades and refresh projects (e.g., Windows 10 upgrades).
- Wi-Fi investigations, site assessments, installation, and maintenance.
- Server and network support and maintenance.
- System relocations for office moves.
- Data centre support and installations.
- Complex network decommissioning and installation, including fibre installs and support.



Scan to find out more



We support our customers effortlessly and efficiently, minimising downtime and optimising performance

## IT Services Roles and Responsibilities

### Workflow Management & Project Coordination:

- **Workflow Management Advisor:** Small to medium-sized project coordination, scheduling of project & BAU requests.

### Technical Services & Support:

- **Customer Technician JR (Service Engineer/Senior Service/System Engineer):** Break-fix callouts, migrations, upgrading site devices (desktops, laptops, mobile devices), network device installations.
- **Customer Technician (Senior Systems, Technical Specialist):** Advanced break-fix support, Wi-Fi survey, design, and documentation.
- **Meeting Room Technician:** Meeting room configuration & installation, digital signage setup.
- **Platforms Engineer:** NEAX work (downsizing exchange legacy devices), data centre cabling, network device upgrades and replacements.
- **Customer Tech Lead, Mobile Lead, Meeting Room Lead, Platforms Lead:** Quoting, design, and team management.

## Specialised Skills & Expertise



### Desktop & Software Expertise:

Windows OS  
Office 365  
Windows Server (build, install, and administer)  
Site Audits  
Packaging (Windows Installer/ Flexera Admin Studio)  
Citrix XenApp/Xen Desktop  
Microsoft Configuration Manager  
Microsoft Deployment Toolkit  
Symantec Endpoint Protection

### Network Expertise:

Cisco  
Juniper  
OTN  
OnNet  
Cabling  
Fibre Splicing  
Install – Rack mounting, inter-rack cabling, and patching

### Telecommunications Expertise:

Cisco IP Voice  
IP Centrex (install and administer)  
Legacy Telecommunications Systems  
Various PSTN Equipment  
Long-distance transmission networks

# Empowering Partners. Delivering Innovation.

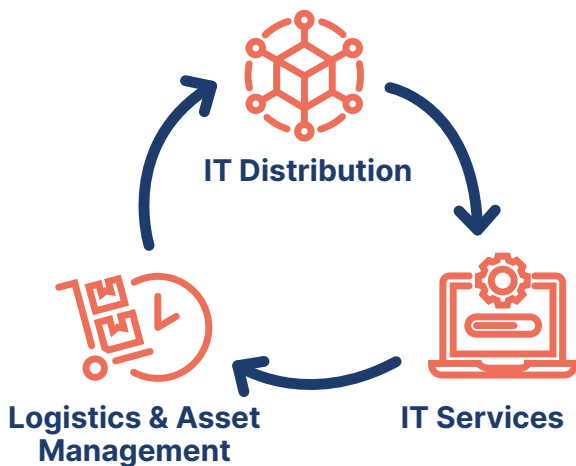
## Bridging Global Technology and Local Success.

### IT Distribution at Entelar Group

Entelar Group connects global technology brands with New Zealand's most forward-thinking resellers, integrators, and enterprises.

### More Than a Distributor

We deliver more than just hardware - we deliver value through trusted relationships, national logistics, and fast reliable service and support - we help our partners win.



### What We Offer

Our IT Distribution team enables the full technology lifecycle - sourcing, deploying, and supporting a wide range of IT hardware, software, and accessories.

Backed by strong vendor partnerships and local expertise, we help partners grow and scale with confidence.

### How We Do It

- **Nationwide Reach:** Warehousing and fulfilment hubs across New Zealand.
- **Strong Channel Network:** Deep partnerships with leading resellers, MSPs, and integrators.
- **End-to-End Support:** From quoting through to post-sales enablement.
- **Expert Product Team:** Guidance at every stage of the sales process.
- **Marketing & MDF:** Co-branded campaigns and funds to support partner growth.
- **Smart Insights:** Real-time data to optimise sales and performance.



Scan to find out more



# Benefits of our IT Distribution

## IT Distribution Division

Entelar Group's IT Distribution division connects global technology brands with New Zealand's most innovative resellers, integrators, and enterprises.

We distribute a comprehensive portfolio of IT hardware, software, and accessories - spanning networking, cybersecurity, collaboration, mobility, and cloud solutions. Backed by a nationwide logistics and channel support network, we provide:



**Cisco:** Industry-leading networking hardware, software, collaboration tools, security solutions, and innovations in AI.

**Broadcom:** Provider of VMware virtualization through the VMware Cloud Service Provider Programme.

**Dubber:** Cloud-native call recording and voice data analytics platform for modern communications.

**Ekahau:** Market-leading Wi-Fi site survey tools and wireless network design software.

**Huawei Ekit:** Smart, reliable networking solutions purpose-built for small business success.

**Motorola:** Innovative consumer smartphones and mobile devices.

**Nokia:** Advanced telecom infrastructure and CPE for B2B applications, including private wireless, data centres, and industrial edge networking.

**Radware:** Comprehensive cybersecurity solutions for on-premises, cloud, and software-defined data centres.

**Rackmount IT:** High-quality racking solutions tailored for all major IT appliances.

**Samsung:** Enterprise-grade mobility and display solutions built for business environments.

**Kensington:** Professional-tier product solutions from docking stations, computer cable locks, to mice, trackballs, and ergonomic tech accessories.

**TruSens:** Innovative air purifiers providing healthier more productive workspaces at home and in the office.



# Powering Smarter, More Efficient Supply Chains

## We Don't Just Move Tech. We Understand It.

At Entelar Group, logistics are at the core of our business success. We provide a fully integrated, end-to-end supply chain solution, simplifying operations and improving efficiency for our partners. Whether integrating with existing systems or designing bespoke service models, we deliver reliable, scalable, and cost-effective supply chain management.

With deep experience in warehousing, logistics, inventory - and the added strength of on-site technical experts - our 4PL services give you full control and visibility across the supply chain.

### Our 4PL Service Offering

#### Strategic Supply Chain Management

- End-to-end supply chain orchestration.
- Multi-vendor coordination & procurement integration.
- Cost optimisation & process efficiency.

#### Warehousing & Inventory Management

- Secure storage of IT, network and IOT Equipment.
- Asset tagging & serial tracking for full visibility.
- Configuration services.
- Real-time inventory management & reporting.

#### Logistics & Distribution

- Pick, pack, and ship services tailored to demand.
- Nationwide logistics coordination & last-mile delivery.
- Custom hot swap & spares management solutions.

#### Reverse Logistics & Sustainability

- Returns, refurbishment & redeployment.
- Sustainable e-waste recycling & disposal.
- Compliance with environmental & industry regulations.

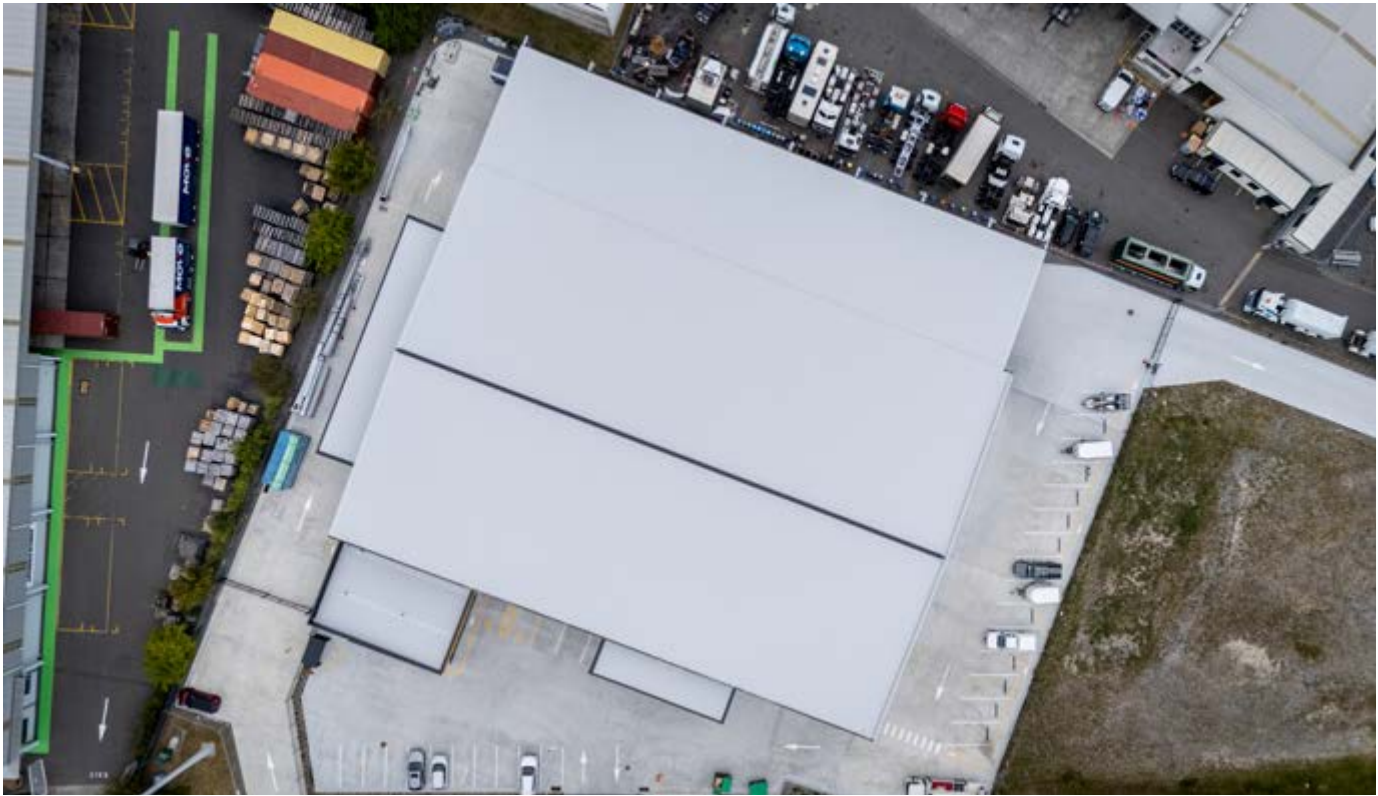
#### Service & Support Models

- Tailored SLAs for fast response & resolution.
- On-site & remote service management.
- Scalable solutions designed for business growth.



Scan to find  
out more





## Why Choose Entelar Group for Supply Chain Solutions?

- **A Single Point of Contact:** Managing multiple vendors, service providers, and logistics partners to optimise your supply chain.
- **Technology-Driven Solutions:** Leveraging data analytics and automation for real-time supply chain visibility.
- **Scalability & Flexibility:** Solutions tailored to business size, industry, and specific operational needs.
- **End-to-End Accountability:** From procurement to final delivery, ensuring seamless execution and operational efficiency.
- **Our People:** Technical expertise to deliver solutions on your behalf.



# Recycle Smart. Securely. Sustainably.

## Enabling Secure & Sustainable Recycling Solutions

Entelar Group delivers comprehensive recycling and resource recovery services encompassing collection, logistics management, processing, and sustainable product destruction.

We are guided by four 'R' priorities - Recover, Re-use, Re-sell and Recycle. All reclaimed materials - including mobile phones, printed circuit boards, copper cables, lead batteries and various metals - are categorised into specific waste-streams and processed according to rigorous environmental protocols.

Established over a decade ago, Entelar Group's Recycling Management Strategy supports standardised waste-stream processes, transparency in recovery operations, best practice sourcing, and full compliance with New Zealand's waste legislation.

This integrated approach underpins our mission to foster a circular, environmentally sustainable economy.

### Key Areas of Expertise

Entelar Group's Technology Lifecycle Services specialises in four core areas, each delivered with industry-leading expertise and tailored to meet specific client requirements and environmental standards.

#### 1. E-Waste Recycling

- Computers, small batteries, cameras, and more.
- PC monitors & TV / Display screens.
- Networking devices.
- Printing, copying, and scanning devices.
- Phones & mobile devices.
- Maximum material recovery and reuse.

Upon arrival at our facility, devices are meticulously dismantled and processed according to industry standards, with hazardous materials handled in compliance with environmental regulations.

**Our commitment: 100% of recovered equipment is channelled through appropriate disposal pathways, with all recycled materials processed according to industry best practices.**



Scan to find  
out more



Recycled Batteries

## 2. Data Destruction

- Data erasure.
- Disk degaussing.
- Hard Drive shredding.
- 6mm & 3mm disintegration.

In addition to technology devices, SSDs, and HDDs, we can also securely destroy:

- CDs, DVDs, Blu-ray discs, and other optical media.
- Floppy disks and other storage media.
- VHS tapes, backup tapes, and other magnetic media.
- Credit cards, plastic, and metal ID cards.
- Uniforms and other sensitive materials.

Data destruction methods vary by device type, age, and risk level, with full transparency through comprehensive audit reporting and destruction certification.

## 3. NZ Information Security Manual (NZISM) Compliant Data Destruction

The NZISM requires the disintegration of components into 6mm or 3mm fragments. Our High-Volume Disintegrator meets these standards, ensuring data security while enabling the recycling of the resulting particles into raw materials.

## 4. Metal Recycling

- Mobile towers, Shelters, Industrial batteries.
- Metal framework, Cabinets, Racking.
- Recovery of steel, Aluminium, Copper cable.

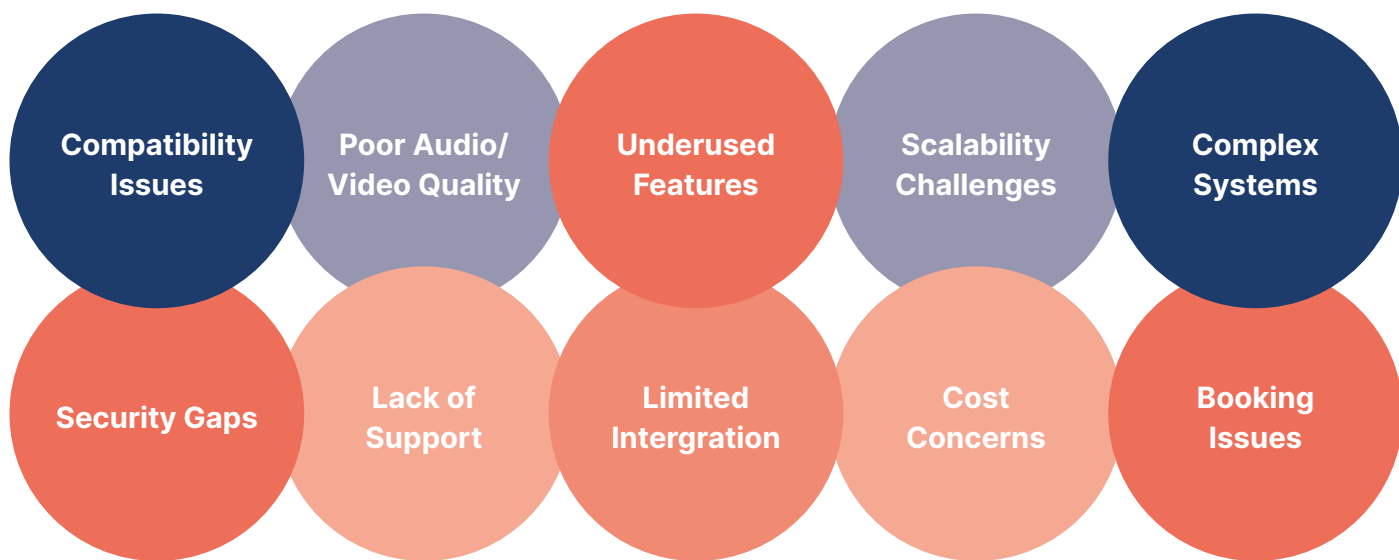
Entelar Group can provide a complete recovery process for large-scale surplus equipment. Utilising our recycling partner network, we can provide site pick-ups, drop-off points and site assistance to remove decommissioned equipment.

# Entelar Group's Recycling Services



# Designing Productive Meeting Spaces

## Own the Room – Upgrade or Start Fresh Common Challenges We Solve



Scan to find out more

# We Create Meeting Rooms That Work

Whether you're upgrading old systems or designing brand-new spaces, we make sure your meeting rooms are set up for seamless connectivity, smart automation, and future-ready scalability.

## What We Offer:

**Clear Audio** - No more echo, feedback, or low volume.

**Reliable Video** - No frozen screens or broken cameras.

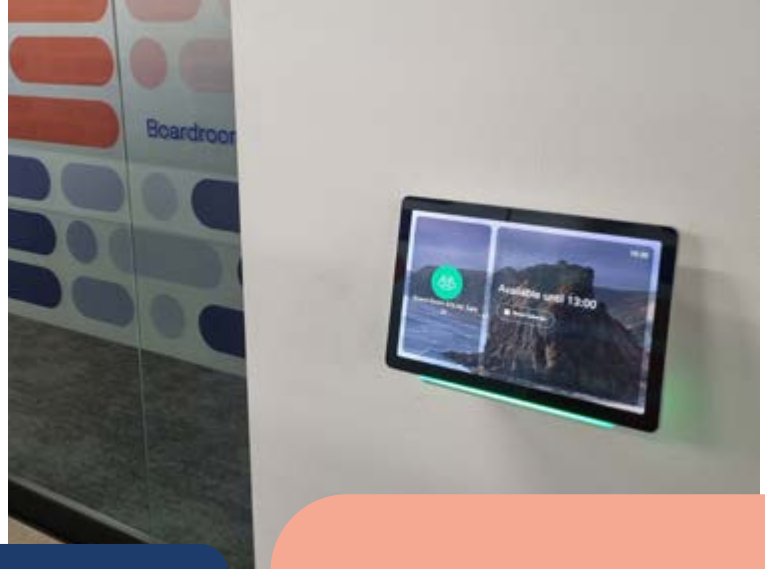
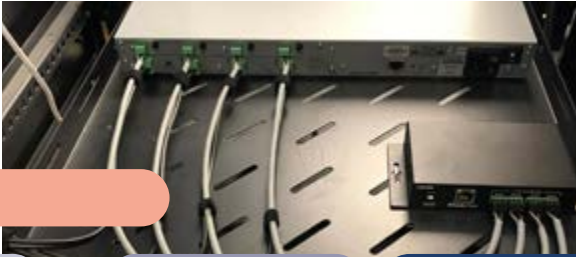
**Seamless Connectivity** - Fast, stable device connections.

**Display & Control Fixes** - Functional screens and responsive controls.

**Automation That Works** - Smooth lighting, blinds, and scheduling.

**Network Optimisations** - No more lag or call dropouts.

**Ongoing Support** - Regular updates and proactive maintenance.



## Audio Excellence:

- **Audio DSP Configuration**  
- Optimised sound clarity.
- **Microphone & Speaker Installations**  
- Crystal-clear audio.
- **Acoustic Treatment & Soundproofing**  
- We work alongside trusted acoustic and AV partners to optimise sound quality in your meeting spaces; combining top-tier AV systems with tailored acoustic treatments.



## Visual Impact:

- **Digital Displays & Video Walls**  
- Stunning, large-scale visuals.
- **Combinable Spaces**  
- Flexible layouts for any event.
- **Lighting Control Systems**  
- Set the perfect atmosphere.



## Control & Automation:

- **Control at your fingertips**  
- One-touch simplicity.
- **Wireless Presentation Systems**  
- Seamless content sharing.
- **Room Scheduling & Booking Systems**  
- Avoid double bookings.



## Connectivity & Integration:

- **Unified Communications Integration**  
- Works with Zoom, Teams & Webex.
- **AV over IP Solutions**  
- Flexible, scalable networks.
- **Network Infrastructure for AV Systems**  
- Reliable performance behind the scenes.

# Bringing Solar Home

Powering your Future with Unlimited, Clean Energy.

## Who We Are

Entelar Energy is a New Zealand-based solar solutions vendor, created by Entelar Group to support the country's transition to a low-carbon future. Locally led and locally supported, we specialise in delivering advanced inverter and battery technology under the Entelar Energy brand, ensuring a streamlined, end-to-end experience for distributors, installers, and businesses.

Our capability spans both residential and commercial solar energy solutions, underpinned by a strong focus on quality, innovation, and service.

**Simplify procurement, installation, and service with a cohesive hardware and software ecosystem – one inverter, one battery, one app, one point of service.**



Scan to find out more

## Our Specialist Capabilities

### Integrated Solar Technology Solution

- **Smart Inverters:** Single and Three-phase for residential; 29.9–50kW models for commercial.
- **Modular Battery Storage Systems:** Scalable 5–30kWh with built-in optimisers.
- **Energy Optimisers and Smart Power Sensors:**
- **Entelar Univers EMS:** A self developed web and mobile platform for real-time monitoring, analytics, and reporting.
- **All-in-One App:** Auto-detects, configures, and manages entire system infrastructure.

### Advanced Safety and Reliability

- **AI-Powered Arc Fault Protection (AFCI):** Fast detection and inverter shutdown in under 0.5 seconds.
- **Built-in Overtemperature, Anti-Islanding, and PID Protection.**
- **100% Depth of Discharge Batteries** with 3-layer protection.
- **No quick-wear parts** engineered for durability and low maintenance.

### Local Support and Stock Holding

- National warehousing and local technical support.
- 10-year warranty on inverters and batteries.
- Real-time fault notification system and hosting for full compliance.

### Performance and Insights

- Dynamic MPPT technology for optimal energy harvesting.
- Detailed ROI reporting, performance metrics, and energy savings calculations via the Entelar Univers platform.
- Complimentary cloud storage for performance history and audit tracking.



## Why Partner with Entelar Energy?

### Designed for NZ Conditions

Our products are engineered to withstand the unique environmental demands of New Zealand - from remote rural sites to urban rooftops.

### One Vendor. One Ecosystem.

Simplify procurement, installation, and service with a cohesive hardware and software ecosystem - one inverter, one battery, one app, one point of service.

### Built for Installers & Distributors

Entelar Energy was designed to make life easier for the solar industry. Our modular, plug-and-play products and consolidated service model reduce complexity and increase speed to install.

### Trusted by the Spark Group

As a member of Spark Group, Entelar Energy operates with the backing of one of New Zealand's most established and trusted enterprises.

# Commitment to Health & Safety

At Entelar Group, safety isn't just a priority - it's embedded in everything we do. Our 360° Health & Safety culture wraps around our people and yours, ensuring a secure, compliant, and proactive working environment.

We focus on:

- **Strong Foundations** – Getting the basics right, encouraging open dialogue, and providing high-quality protective equipment.
- **Robust Processes** – Ensuring compliance, minimising risks, and continuously learning from every situation.
- **Ongoing Training** – Regular competency assessments and clear procedures to handle incidents effectively.
- **Commitment to Safety Standards** – We prioritise safety ensuring full compliance with NZ's Health and Safety Work Act 2015.

With an active Health & Safety management system in place, we empower our team to work confidently and safely. Because at Entelar Group our goal is simple:

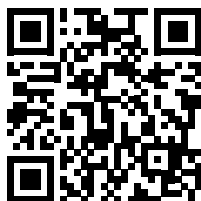
**Everyone goes home safe and sound at the end of each working day.**







**Connect**  
**with us**



Scan to find  
out more

**Auckland Office**

Lvl 3, 46 Sale Street, Freeman's Bay, Auckland

**Gabador Warehouse**

19 Gabador Place, Mt. Wellington, Auckland

**Westfield Warehouse**

8 Westfield Place, Mt. Wellington, Auckland

**Hamilton Warehouse**

4 Charlie's Way, Frankton, Hamilton

**Wellington Office**

Level 9, 42 Willis Street, Wellington Central,  
Wellington

**Christchurch Warehouse**

76 Columbia Ave, Hornby South, Christchurch

[sales@entelargroup.co.nz](mailto:sales@entelargroup.co.nz)

[www.entelargroup.co.nz](http://www.entelargroup.co.nz)

**0800 835 344**