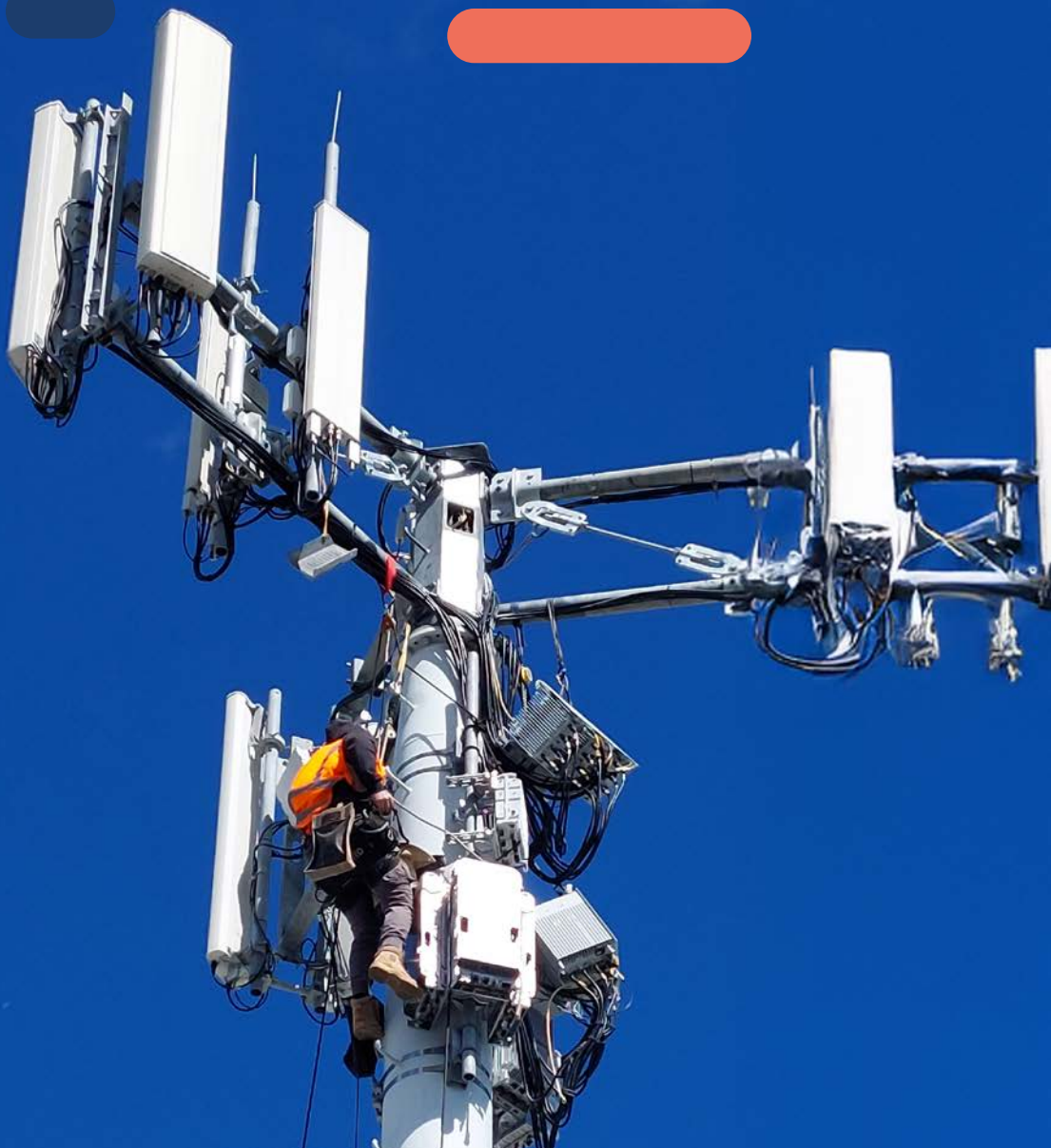


Mobile Infrastructure that Connects New Zealand

Mobile Infrastructure Solutions



Keeping New Zealand in Touch

Entelar Group is New Zealand's trusted mobile infrastructure leader, powering modern networks nationwide through comprehensive end-to-end services. Entelar Group partners with premier mobile network operators and tower companies to deliver high-performance connectivity solutions that benefit businesses, public services, and communities throughout the country.

Combining technical excellence and local expertise at every stage, particularly in implementing sophisticated Radio Networks and structural systems, Entelar Group's skilled delivery teams excel at deploying and maintaining large-scale infrastructure – all while minimising downtime and maximising network reliability.

Entelar Group's end-to-end approach covers the complete network life-cycle from initial planning and site acquisition to design, engineering, construction, integration, and ongoing maintenance.

Building the Infrastructure That Connects

Entelar Group provides deep technical capability across all essential network components. Areas of specialisation include:

Radio & Transmission Networks

- Design and deployment of radio networks including base stations and antennas that ensure high-quality coverage.
- Development of transmission networks enabling high-capacity data transfer using microwave and fibre backhaul solutions.

Indoor Coverage Systems

- Distributed Antenna Systems (DAS) that provide reliable service within office buildings, malls, and public venues.

Passive Infrastructure

- Delivery of towers, poles, shelters, and integrated power systems – forming the foundation on which active equipment operates.

IoT Integration

- Support for IoT enablement for scalable machine-to-machine connectivity across a range of industries.
- Preparation of networks for future technological demands.

An aerial photograph showing a mobile infrastructure site. A tall, white lattice tower stands prominently on a grassy field. At its base, there is a construction area with several vehicles, including a red crane truck and a white van. The ground around the tower is disturbed, likely from recent construction work. The background shows a mix of green grass and brown earth. The image is framed by decorative orange, grey, and blue shapes on the left and right sides.

We combine cutting-edge Mobile technology with deep industry expertise to create tailored solutions that keep businesses and communities connected.



Deployment & Delivery Models

Entelar Group offers scalable deployment services, including:

- **Greenfield Developments:** New mobile sites in underserved areas.
- **Network Modernisation:** Infrastructure upgrades and technology replacements to enhance capabilities.
- **Temporary & Event Solutions:** Short-term coverage for events and emergencies.

We manage all processes end-to-end, ensuring seamless integration with minimal service disruption.

Project Support & Supply Chain Excellence

Exceptional deployments require exceptional support. Entelar Group offers a comprehensive suite of logistics, warehousing, and procurement services to ensure streamlined delivery. A national supply chain network enables fast turnaround times and full SLA compliance, with sophisticated forecasting capabilities. This all contributes to helping clients stay ahead of network demand, reducing delays and optimise project costs.

Entelar Group's Mobile Infrastructure Services



Why Choose Entelar Group?

Entelar Group is New Zealand's leading integrated technology solutions provider, supporting the critical infrastructure that keeps our country connected. From civil works and fibre deployment to mobile networks, IT distribution, logistics, and IT services - we manage the full lifecycle, from design and build to responsible recycling.

With over 450 locally based staff and 120 service touchpoints nationwide, our reach and technical depth make us the trusted partner for powering New Zealand's digital future. Every solution is underpinned by best practice in Health and Safety, ensuring reliability and care at every step.

Solutions made simple. Coverage that spans the country.

Commitment to Health & Safety

At Entelar Group, safety isn't just a priority - it's embedded in everything we do. Our 360° Health & Safety culture wraps around our people and yours, ensuring a secure, compliant, and proactive working environment.

We focus on:

- **Strong Foundations** – Getting the basics right, encouraging open dialogue, and providing high-quality protective equipment.
- **Robust Processes** – Ensuring compliance, minimising risks, and continuously learning from every situation.
- **Ongoing Training** – Regular competency assessments and clear procedures to handle incidents effectively.
- **Commitment to Safety Standards** – We prioritise safety ensuring full compliance with NZ's Health and Safety Work Act 2015.

With an active Health & Safety management system in place, we empower our team to work confidently and safely. Because at Entelar Group. Our goal is simple:

Everyone goes home safe and sound at the end of each working day.



Connect **with us**

Find out more

sales@entelargroup.co.nz
www.entelargroup.co.nz
0800 835 344

