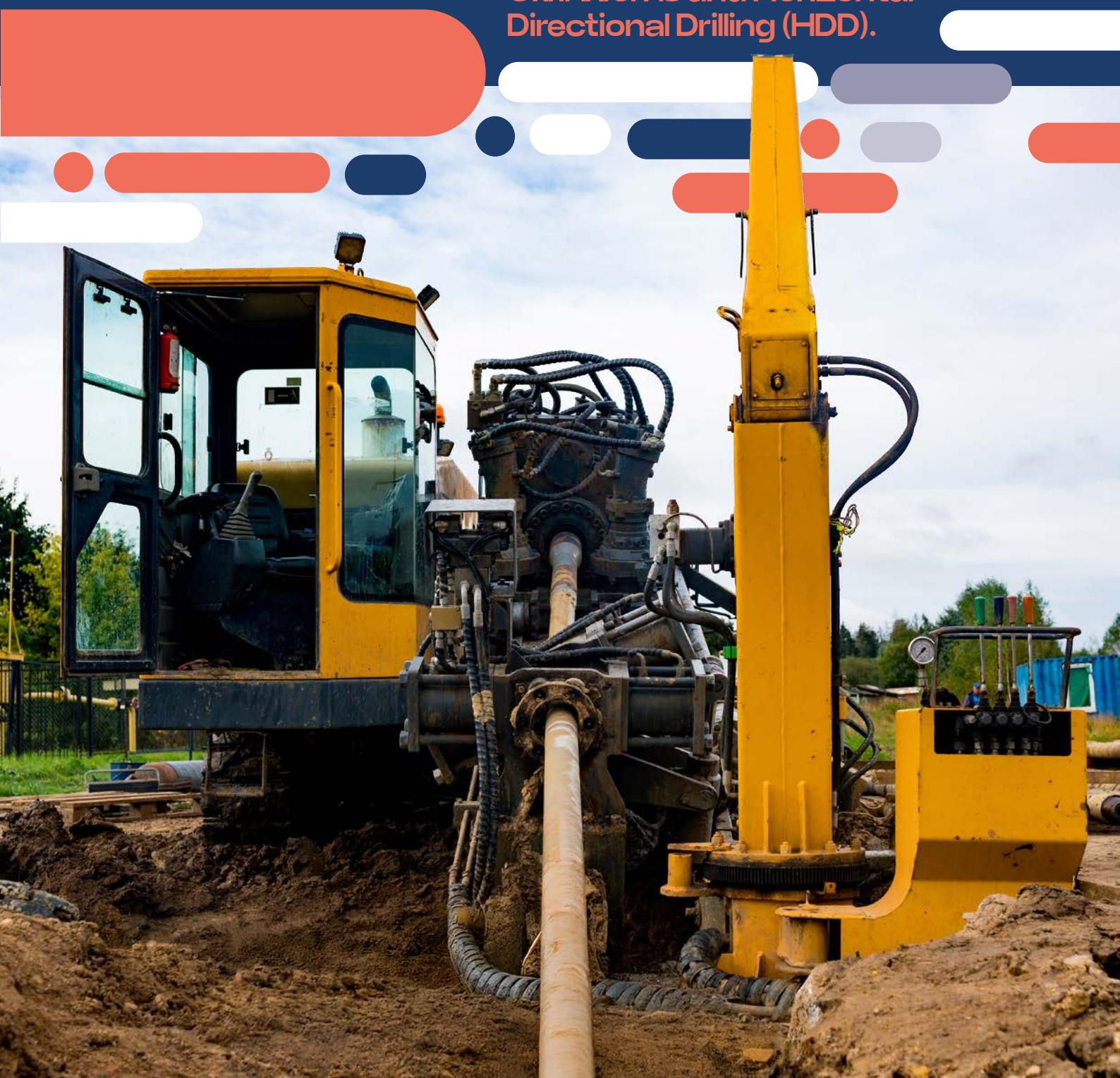


Drilling the right way

Civil Works and Horizontal Directional Drilling (HDD).



Precision Underground Solutions

Entelar Group is a leader in civil infrastructure, specialising in Horizontal Directional Drilling (HDD) and underground solutions across New Zealand. Our expertise spans water renewals, fibre deployment, fibre design, and broader civil works, ensuring future-ready connectivity with precision, sustainability, and minimal disruption.

Horizontal Directional Drilling Applications:



Telecommunication Cables (Fibre Optic Core Network)

- Trenchless installation of high-speed fibre optic cables connecting cell sites and customer premises across to core networks.
- Installation of ducting.



Water & Sewer Pipelines

- Install pipes under roads, rivers, and urban areas without disturbing the surface.



Electrical Power Cables

- Install underground power lines under roads or through environmentally sensitive zones.



Stormwater Drainage Systems

- Construct stormwater pipes without digging up streets or landscapes.



Railway Crossings

- Install utilities beneath rail tracks without disrupting train services.
- Design resource consenting and installation of pipes under rail corridors.



Landing Support for Submarine Cable Installations

- Lay underwater cables for internet or power transmission.





Key area of expertise: HDD for Fibre

Benefits of HDD



Minimal Surface
Disruption



Faster and
Less Intrusive
Installation



Cost-Effective



Environmentally
Friendly

Why HDD for Fibre Optic Installations?

HDD has transformed the way underground utilities are installed, particularly in high-density urban areas, commercial zones, and environmentally sensitive regions. Traditional trenching methods are often disruptive, time-consuming, and costly, while HDD provides a trenchless, efficient, and cost-effective solution that ensures fibre networks are deployed faster, safer, and with minimal surface impact.

Key Benefits of HDD for Duct Installation

- **Minimal Surface Disruption** – No need for extensive excavation, reducing road closures, business downtime, and environmental damage.
- **Precision and Accuracy** – HDD technology allows for exact placement of fibre conduits, following a pre-determined bore path beneath obstacles such as roads, rivers, railways, and existing infrastructure.
- **Faster Deployment** – HDD enables quicker installation, reducing labour and restoration costs while meeting tight project timelines.
- **Future-Proofing Networks** – Our solutions support high-speed fibre demands, ensuring New Zealand's networks are built for the future.
- **Environmental and Safety Compliance** – With HDD, we significantly reduce the impact on the surrounding environment and adhere to local compliance and safety regulations.

Why Choose Entelar Group?

Entelar Group is New Zealand's leading integrated technology solutions provider, supporting the critical infrastructure that keeps our country connected. From civil works and fibre deployment to mobile networks, IT distribution, logistics, and IT services - we manage the full lifecycle, from design and build to responsible recycling.

With over 450 locally based staff and 120 service touchpoints nationwide, our reach and technical depth make us the trusted partner for powering New Zealand's digital future. Every solution is underpinned by best practice in Health and Safety, ensuring reliability and care at every step.

Solutions made simple. Coverage that spans the country.

Commitment to Health & Safety

At Entelar Group, safety isn't just a priority - it's embedded in everything we do. Our 360° Health & Safety culture wraps around our people and yours, ensuring a secure, compliant, and proactive working environment.

We focus on:

- **Strong Foundations** – Getting the basics right, encouraging open dialogue, and providing high-quality protective equipment.
- **Robust Processes** – Ensuring compliance, minimising risks, and continuously learning from every situation.
- **Ongoing Training** – Regular competency assessments and clear procedures to handle incidents effectively.
- **Commitment to Safety Standards** – We prioritise safety ensuring full compliance with NZ's Health and Safety Work Act 2015.

With an active Health & Safety management system in place, we empower our team to work confidently and safely. Because at Entelar Group our goal is simple:

Everyone goes home safe and sound at the end of each working day.



Connect **with us**

Find out more

sales@entelargroup.co.nz
www.entelargroup.co.nz
0800 835 344

